

Issue 301: October. 5, 2007

Market Activity (week ending October. 5, 2007)

Transaction name	Class details	Rating	Sector	Date
<b>Launched</b>				
Calibre Fund No.1	Class A, A\$191.8 million, due Oct, 2038 Class B, A\$8.2 million, due Oct, 2038	AAA AA	RMBS	Oct. 3, 2007
<b>Ratings Downgrade</b>				
Longreach CP Ltd. Series 7	Tranche 1 A\$12 million, due July, 2011	To: AAp N.R.i From: AA+p N.R.i	CDO	Oct. 3, 2007
Longreach CP Ltd. Series 12	Tranche 1 A\$14.2 million, due Sept, 2011	To: AAp N.R.i From: AA+p N.R.i	CDO	Oct. 3, 2007
	Tranche 2 A\$1 million, due Sept, 2011	To: AAp N.R.i From: AA+p N.R.i		
Longreach CP Ltd Series 14	Tranche 1 Principal A\$15.8 million, due Dec, 2011	To: AAp N.R.i From: AA+p N.R.i	CDO	Oct. 3, 2007
	Tranche 2 Principal A\$2 million, due Dec, 2011	To: AAp N.R.i From: AA+p N.R.i		
Longreach CP Ltd Series 16	Principal A\$14.7 million, due March, 2012	To: AAp N.R.i From: AA+p N.R.i	CDO	Oct. 3, 2007
Longreach CP Ltd Series 17	Tranche 1 A\$14.5 million, due May, 2012	To: AAp N.R.i From: AA+p N.R.i	CDO	Oct. 3, 2007
	Tranche 2 Principal A\$2 million, due May, 2012	To: AAp N.R.i From: AA+p N.R.i		
	Tranche 3 Principal A\$0.5 million, due May, 2012	To: AAp N.R.i From: AA+p N.R.i		
Longreach CP Ltd Series 18	A\$14.5 million, due June, 2013	To: AAp N.R.i From: AA+p N.R.i	CDO	Oct. 3, 2007

## At a Glance

### New Term Securitisation Issuance

#### Year-to-date 2007 vs Year-to-date 2006

#### No. of Transactions

Sector	2007 YTD	2007 YTD (% of total)	2006 YTD	2006 YTD (% of total)	2007 YTD vs 2006 YTD %
RMBS	33	55.0%	32	38.6%	3.1% ↑
CMBS	8	13.3%	14	16.9%	-42.9% ↓
ABS	11	18.3%	11	13.3%	0.0%
CDO/Repack	8	13.3%	26	31.3%	-69.2% ↓
<b>Total</b>	<b>60</b>	<b>100.0%</b>	<b>83</b>	<b>100.0%</b>	<b>-27.7% ↓</b>

#### Volume of Transactions

Sector	2007 YTD (mil. A\$)	2007 YTD (% of total)	2006 YTD (mil. A\$)	2006 YTD (% of total)	2007 YTD vs 2006 YTD
RMBS	53,805	87.5%	43,765	81.2%	22.9% ↑
CMBS	1,917	3.1%	3,201	5.9%	-40.1% ↓
ABS	4,652	7.6%	1,984	3.7%	134.4% ↑
CDO/Repack	1,147	1.9%	4,960	9.2%	-76.9% ↓
<b>Total</b>	<b>61,522.0</b>	<b>100.0%</b>	<b>53,910.1</b>	<b>100.0%</b>	<b>14.1% ↑</b>

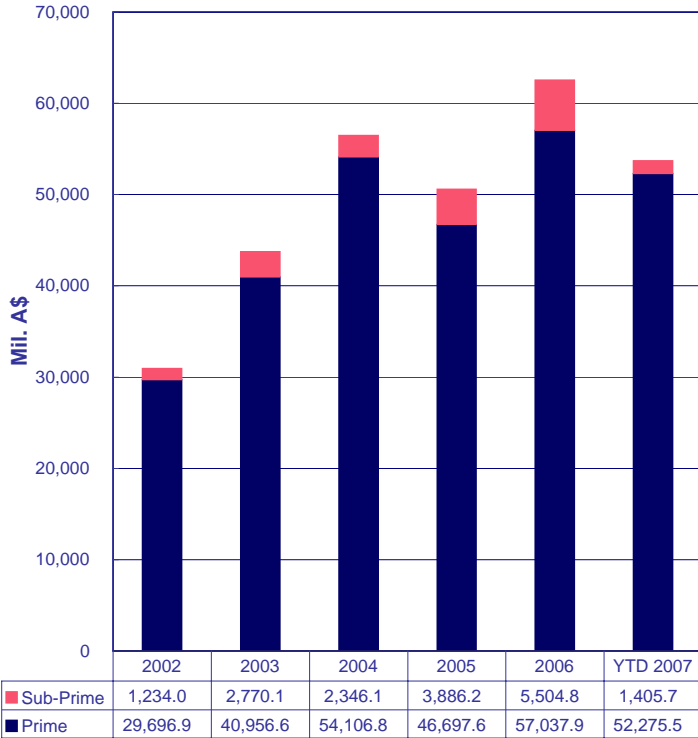
#### By Sector



Data at Oct. 5, 2007

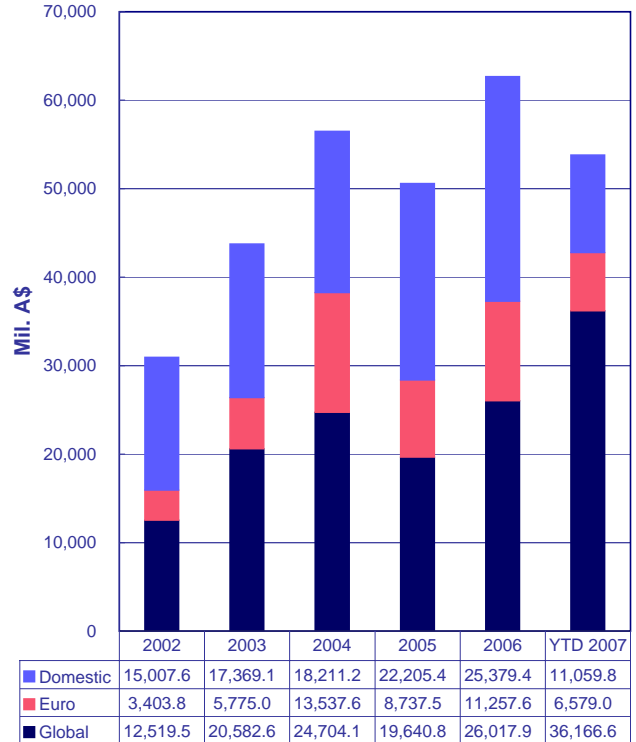
## RMBS Snapshot YTD RMBS Issuance

### By Sector



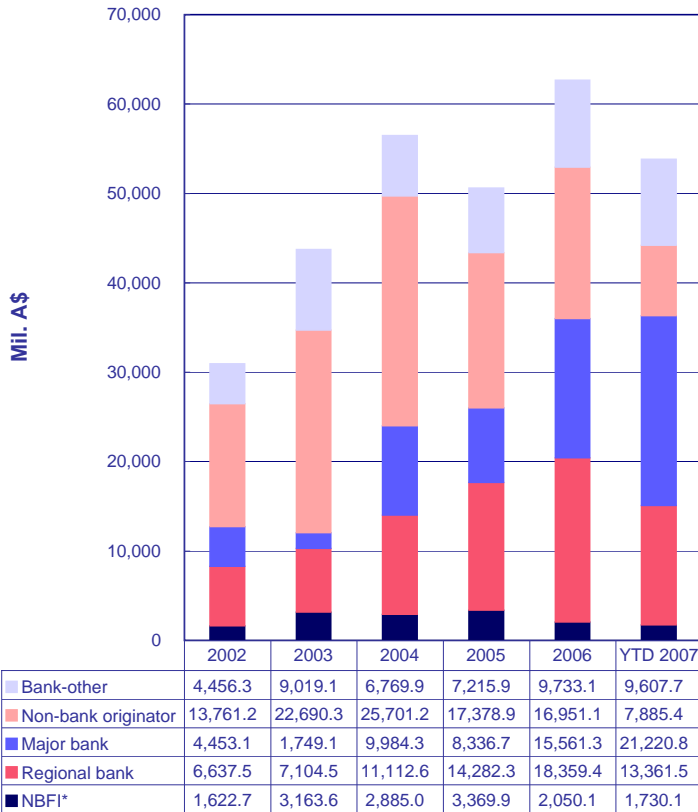
Data at Oct. 5, 2007

### By Market of Issuance



Data at Oct. 5, 2007

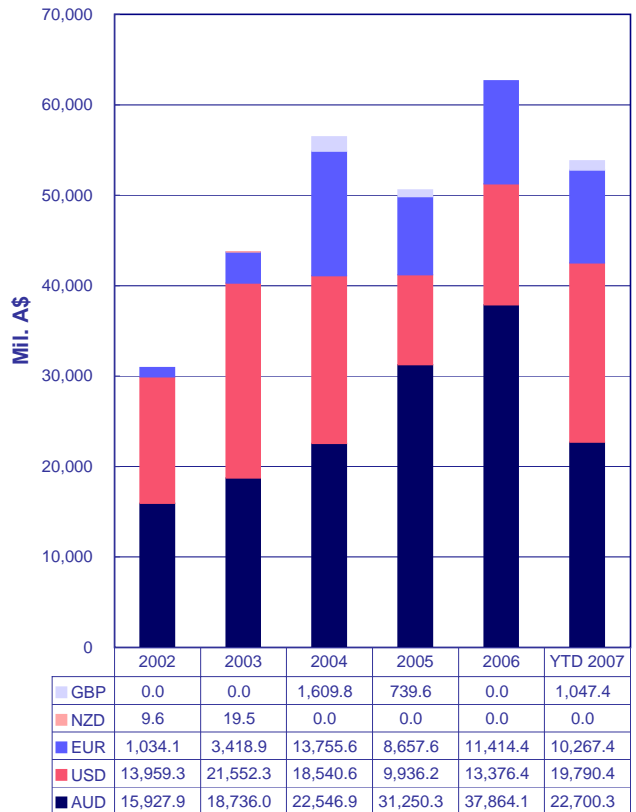
### By Originator Type



Data at Oct. 5, 2007

NBFIs\* = Nonbank Financial Institution

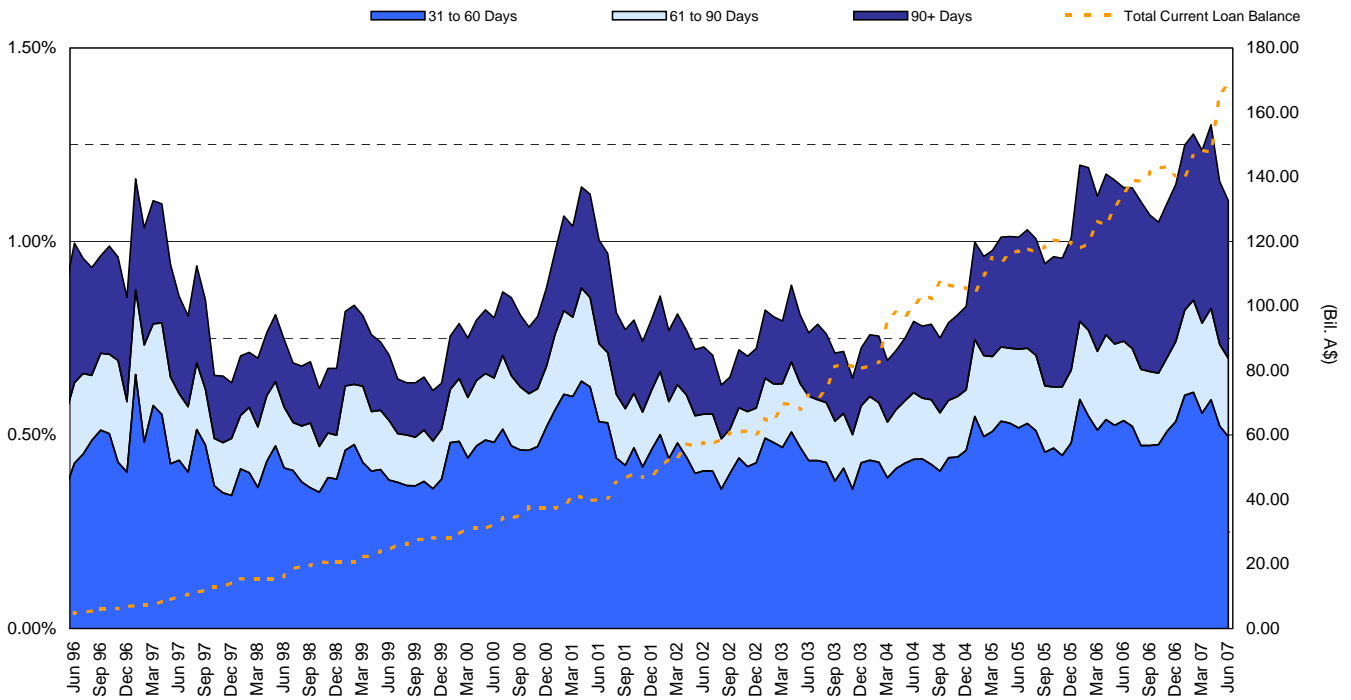
### By Currency



Data at Oct. 5, 2007

## RMBS Performance

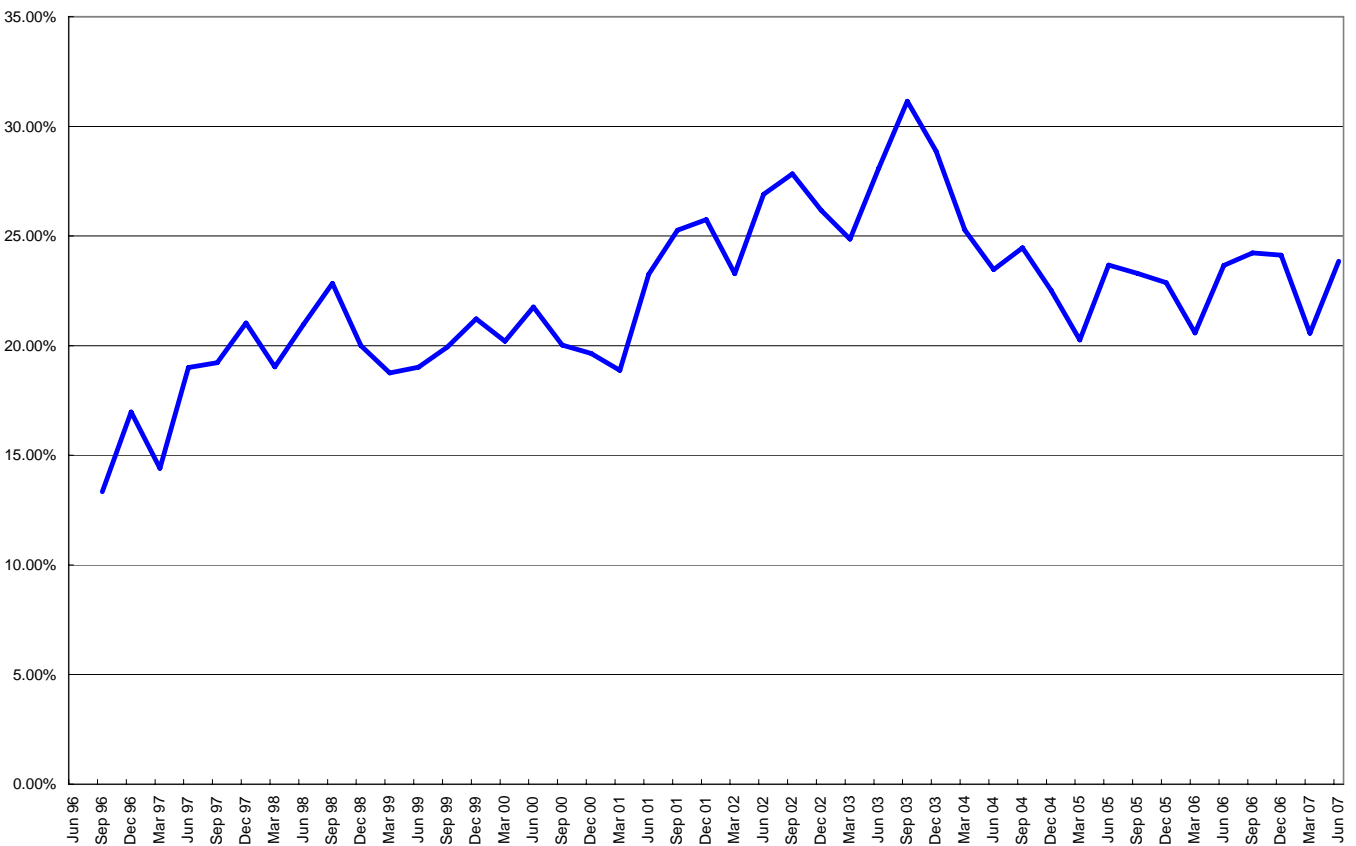
Australian Prime Standard & Poor's Mortgage Performance Index (SPIN)



[Australian SPIN June, 2007](#)

[Australian RMBS Arrears Statistics - June, 2007](#)

Standard & Poor's - RMBS Prime - Prepayment Index (SPPI)



[Australian SPPI June, 2007](#)

## Resource Centre

Article	Date Published
<b>General</b>	
<a href="#">The Fundamentals of Structured Finance Ratings</a>	Aug. 23, 2007
<a href="#">Ratings Roundup: Second Quarter 2007 Global Structured Finance Performance Trends</a>	Aug. 16, 2007
<a href="#">Criteria: Principles-Based Rating Methodology For Global Structured Finance Securities</a>	May 29, 2007
<a href="#">Criteria: Revised Framework For Applying Counterparty And Supporting Party Criteria</a>	May 8, 2007
<a href="#">Guide To Legal Issues In Rating Australian Securitization</a>	March 2, 2007
<b>RMBS</b>	
<a href="#">Australian RMBS Arrears Statistics - June 2007</a>	Aug. 23, 2007
<a href="#">Australian RMBS Performance Watch June 2007 Part 1</a>	Sept 27, 2007
<a href="#">Australian RMBS Performance Watch June 2007 Part 2</a>	Sept. 27, 2007
<a href="#">Australian RMBS Performance Watch June 2007 Pool Statistics</a>	Sept. 27, 2007
<a href="#">Investor Guide To Australia's Housing Market And Residential Mortgage-Backed Securities</a>	Jan. 3, 2007
<a href="#">Australian &amp; New Zealand RMBS: Analysing Credit Quality</a>	Feb. 21, 2007
<a href="#">Twice As High: Understanding the LoDoc SPIN</a>	April 19, 2006
<a href="#">Criteria: Securitization Of Construction Loans In Australian RMBS</a>	Nov. 15, 2005
<b>RVMBs</b>	
<a href="#">Australia &amp; New Zealand Reverse Mortgage Criteria</a>	Sept. 27, 2005
<b>CMBS</b>	
<a href="#">Australia &amp; New Zealand CMBS Performance Watch December 31, 2006</a>	May 3, 2007
<b>SME</b>	
<a href="#">Tailored to Fit: SME Loan Securitization In Australia &amp; New Zealand</a>	Nov. 14, 2005
<b>ABS</b>	
<a href="#">Australian &amp; New Zealand ABS Performance Watch June 2007</a>	Sept. 16, 2007
<b>CDOs</b>	
<a href="#">CDO Spotlight: Synthetic ROC And The Surveillance of Synthetic CDOs</a>	March 15, 2004
<b>ABCP</b>	
<a href="#">Inside ABCP July 2007</a>	Sept. 20, 2007
<a href="#">Global Asset-Backed Commercial Paper Criteria</a>	Oct. 28, 2005
<b>Servicer Evaluations</b>	
<a href="#">Servicer Evaluation Reports</a>	
<a href="#">Servicer Evaluation Criteria: Australia and New Zealand</a>	March 28, 2007

NR - Not rated. N/A - Not Applicable. N.A. - Not Available

For enquiries please contact Debra Asbury on (61) 3-9631-2056 or email [debra\\_asbury@standardandpoors.com](mailto:debra_asbury@standardandpoors.com).

Privacy Policy Terms of Use Disclaimers Other Legal Notice Copyright © 2006

Standard & Poor's, a division of the McGraw-Hill Companies, Standard & Poor's (Australia) Pty Ltd. Level 37, 120 Collins Street, Melbourne 3000 (61) 3-9631-2000. All rights reserved. At Standard & Poor's, our analytic services are performed as entirely separate activities in order to preserve the independence and objectivity of each analytic process. All non-public information received during any analytic process, including credit ratings, is held in confidence. Our analysts do not disclose non-public information outside their specific analytic areas.

Published by Standard & Poor's, a Division of The McGraw-Hill Companies, Inc. Executive offices: 1221 Avenue of the Americas, New York, NY 10020. Editorial offices: Level 37, 120 Collins Street, Melbourne, VIC 3000, Australia; 36th floor, Edinburgh Tower, The Landmark, 15 Queen's Road Central, Hong Kong; 30 Cecil Street, Prudential Tower #17-01/08, Singapore 049712. Subscriber services: (61) 3-9631-2144. Copyright 2006 by The McGraw-Hill Companies, Inc. Reproduction in whole or in part prohibited except by permission. All rights reserved. Information has been obtained by Standard & Poor's from sources believed to be reliable. However, because of the possibility of human or mechanical error by our sources, Standard & Poor's or others, Standard & Poor's does not guarantee the accuracy, adequacy, or completeness of any information and is not responsible for any errors or omissions or the result obtained from the use of such information. Ratings are statements of opinion, not statements of fact or recommendations to buy, hold, or sell any securities.

Standard & Poor's uses billing and contact data collected from subscribers for billing and order fulfillment purposes, and occasionally to inform subscribers about products or services from Standard & Poor's, our parent, The McGraw-Hill Companies, and reputable third parties that may be of interest to them. All subscriber billing and contact data collected is stored in a secure database in the U.S. and access is limited to authorized persons. If you would prefer not to have your information used as outlined in this notice, if you wish to review your information for accuracy, or for more information on our privacy practices, please call us at (1) 212-438-7280 or write us at: [privacy@standardandpoors.com](mailto:privacy@standardandpoors.com). For more information about The McGraw-Hill Companies Privacy Policy please visit [www.mcgraw-hill.com/privacy.html](http://www.mcgraw-hill.com/privacy.html).

Analytic services provided by Standard & Poor's Ratings Services ("Ratings Services") are the result of separate activities designed to preserve the independence and objectivity of ratings opinions. Ratings are statements of opinion, not statements of fact or recommendations to buy, hold, or sell any securities. Ratings are based on information received by Ratings Services. Other divisions of Standard & Poor's may have information that is not available to Ratings Services. Standard & Poor's has established policies and procedures to maintain the confidentiality of non-public information received during the ratings process. Ratings Services receives compensation for its ratings. Such compensation is normally paid either by the issuers of such securities or third parties participating in marketing the securities. While Standard & Poor's reserves the right to disseminate the rating, it receives no payment for doing so, except for subscriptions to its publications. Additional information about our ratings fees is available at [www.standardandpoors.com/usratingsfees](http://www.standardandpoors.com/usratingsfees).

Permissions: To reprint, translate, or quote Standard & Poor's publications, contact: Client Services, 120 Collins Street, Melbourne, Vic 3000 Australia, (61) 3-9631-2144. This report and the ratings contained within it are based on published information as of September 28, 2007. Subsequent information may result in the assignment of ratings that differ from the ratings published here. Please call Standard & Poor's at (61) 3-9631-2000 for the most recent rating assigned.

For Australian Users—In Australia, credit ratings are assigned by Standard & Poor's (Australia) Pty Limited, which does not hold an Australian financial services license under the Corporations Act 2001. Any rating and the information contained in any research report published by Standard & Poor's (Australia) Pty Limited is of a general nature. It has been prepared without taking into account any recipient's particular financial needs, circumstances and objectives. Therefore, a recipient should assess the appropriateness of such information to it before making an investment decision based on this information.